

# SHX Series(900 - 1500W)

## Portable Gasoline Generators

SPEC. 5P

### SHX1000



Rated Output <b>900 W</b> (50/60Hz)	Dry Weight <b>13.6 kg</b> (R,S,L Type)	Continuous Operating Hours <b>8.6 h</b> (1/2 load)
---	--	--

#### FEATURES

##### -Advanced Technology<sup>\*3</sup>

Newly designed Multi-pole Alternator and high speed engine dramatically reduced the size and weight.

##### -Honda 4-stroke Engine

Honda multi purpose engine has been industry standard for reliability and durability in the world. Also guaranteed with just a light pull on the recoil starter.

##### -Long Operating Hours

Large fuel tank allows efficient work without refueling.

##### -Portability

These models are especially easy to carry.

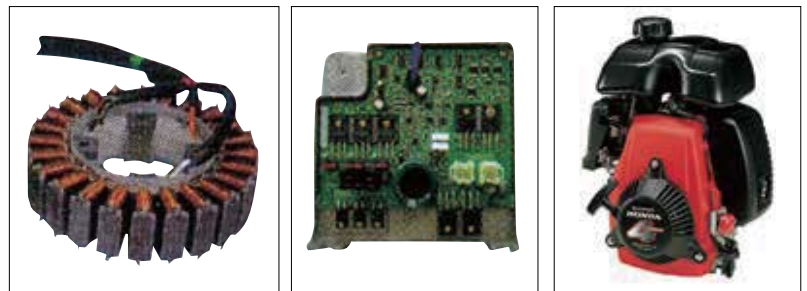
##### -Lower Sound Level(Silent and Power mode)

This unique designed silent mode for SHX1000 provides extremely lower sound level with 3/4 load. Just in case to take full load, only to change to Power mode.

##### -Compact & Light Weight

The SHX1000 weighs only 13.6kg, The SHX2000 weighs only 21kg, less than half of the weight of similar capacity conventional generator.

### SHX2000



\*3

Rated Output <b>1500 W</b> (50/60Hz)	Dry Weight <b>21 kg</b> (R,S,L Type)	Continuous Operating Hours <b>7.0 h</b> (1/2 load)
--	--	--



without it...it's

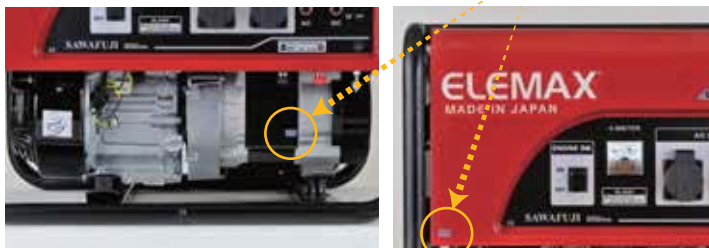
## How to Authenticate ELEMEX Generators

**FAKE!**

#### Check Point

#### 1 -TRUSTGRAM-

Make sure that the security label of "TRUSTGRAM" is put on the product body.



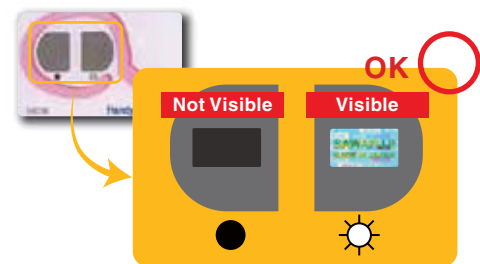
Without TRUSTGRAM...



#### Check Point

#### 2 -HOLOGRAM-

Make sure that the following change is visible through the "VIEWER"



Window	●	☀
OK	Not Visible	Visible
FAKE	Not Visible	Not Visible
FAKE	Visible	Visible
FAKE	Visible	Not Visible

# SPECIFICATIONS

## EX Series

Gasoline Generators				3P FEATURES							
Models				SH3200EX	SH3900EX	SH4600EX	SH5300EX	SH6500EX	SH7600EX		
Type				R-type: 220V(50Hz), S-type: 220V(60Hz), D-type: 110/220V(60Hz), LD-type: 120/240V(60Hz)							
Generator				50, 60							
Frequency (Hz)				Self-Exciting, 2-pole, Field Rotating Type							
Type				AVR							
Voltage Regulation System				Single							
Phase				Single							
AC Output (KVA)				Rated Power (KVA)	50Hz	2.2	2.8	3.2	3.8	5.0	5.6
				60Hz	2.5	3.2	3.8	4.4	5.6	6.5	
				Maximum Power (KVA)	50Hz	2.6	3.3	4.0	4.7	5.8	
				60Hz	3.2	3.9	4.6	5.3	6.5	7.6	
Rated Voltage (V)				R:220(50Hz), S:220(60Hz), D:110/220(60Hz), LD:120/240(60Hz)							
DC Output (V-A)				12V-8.3A							
Rated Power Factor (cos)				1.0							
Engine				Honda							
Maker				Honda							
Models				GX160	GX200	GX240	GX270	GX340	GX390		
Displacement (CC)				163	196	270	270	389	389		
Net Power (kW)				3.600rpm	3.6	4.1	5.9	6.3	8.0	8.7	
Ignition System				Transistor							
Oil Alert System				YES							
Starting System				Recoil							
L x W x H (mm)				623 X 435 X 491				708 X 548 X 493			
Dry Weight (kg)				44	46	63	68	75	78		
Fuel Tank Capacity (litres)				17				28			
Sound Level (dB) [dB(A)/7m]				50Hz	64	65	63	70	71	73	
				60Hz	68	69	71	72	75	76	
				50Hz	14	10	14	12	10	8.5	
				60Hz	12	8.8	11	10	7.9	7.2	

## SHX Series

Portable Gasoline Generators				4P FEATURES							
Models				SHX 1000				SHX 2000			
Type				R	G	S	L	R	G	S	L
Generator				50				60			
Frequency (Hz)				5800/4100(Power Mode/Silent Mode)				4500			
Engine Speed (rpm)								Square-Wave			
Waveform								1900			
AC Output				1000				1700			
Maximum Power (W)				900				1500			
Rated Power (W)				220	230	220	120	220	230	220	120
Rated Voltage (V)								Only for Charging 12V Automotive Batteries.			
DC Output				Maximum Charging Output = 8.3/4.2 A(Power Mode/Silent Mode)				Maximum charging output = 8.3A			
Insulation Class								B			
Engine				Honda				Honda			
Maker				GXH50				GX100			
Models				Air Cooled OHV 4-stroke Gasoline				Air Cooled OHC 4-stroke Gasoline			
Type				49.4				98.5			
Displacement (CC)				465 x 265 x 380				560 x 340 x 415			
L x W x H (mm)				13.6	14.0	13.6	13.6	21.0	22.0	21.0	21.0
Dry Weight (kg)				3.8				7.7			
Fuel Tank Capacity(litres)				58(1/2 load)				63(1/2 load)			
Sound Level				89(3/4 load)				93(3/4 load)			
[dB(A)/7m]				5.5(rated load) 8.6(1/2 load)				7			
[dB Lwa]								LED			
Continuous Operable Hours								LED			
Pilot Lamp								YES			
Power Indicator				Interlocking with Fuel Cock				Rocker Switch			
Oil Alert System				Plug Socket x 1				Plug Socket x 2			
Engine Stop				Control Circuit				Terminal			
AC				Thermal Type Circuit Breaker							
Output											
Protective Device											
DC											
Output											
Protective Device											

## HEAVY DUTY Type

Diesel Generators				1-2P FEATURES											
Models				SH07D	SH11D	SH15D	SHT15D	SHT17D	SH20D	SHT25D					
Type				R	LD	R	LD	R	D	R	S	LD	R	S	
Generator				50				60				60			
Frequency (Hz)				Self-exciting, 2-pole, Field Rotating Type				Self-exciting, 4-pole, brushless, Field Rotating Type							
Type				Single				Three				Single			
Phase				AVR				AVR				AVR			
Voltage Regulation System				5.5				8.0				12			
Rated Power (KVA)				6.5				10.0				13			
60Hz				220				120/240				220			
Rated Voltage (V)				120/240				220				120/240			
Rated Power Factor (cos)				1.0				1.0				0.8			
Engine				Kubota								Kubota			
Maker				Z482				D722				D1005			
Models				479				719				1001			
Displacement (CC)				8.1(3,600rpm)				12.2(3,600rpm)				26(3,600rpm)			
Maximum Horse Power (PS)				1066 x 618 x 698				1281 x 618 x 698				1474 x 698 x 869			
L x W x H (mm)				235				295				387			
Dry Weight (Kg)				28				295				540			
Fuel Tank Capacity (liters)				66.5				68.0				68.0			
Sound Level				67.5				69.0				71.0			
[dB(A)/7m]				15.6				11.2				10.8			
50Hz				13.3				8.5				9.0			
60Hz															
Continuous Operating Hours (h)				YES				YES				NO			
Volt Meter				NO				YES				NO			
Ampere Meter				YES				YES				YES			
Hour Meter				YES				YES				YES			
Warning Lights				YES				Indicator Lights (4-conditions)							
Output				R: Plug Socket x 2, LD: Plug Socket x 3				Plug Socket x 2				Terminal & Socket			
ATS Terminals				YES				YES				YES			

## SHX Series

Diesel Generators				1P FEATURES									
Models				SHX800Di	SHX1200Di								
Type				R	LD	R	LD						
Frequency (Hz)				50	60	50	60						
Generator				Permanent Magnet, Multi-Pole Alternator									
Type				Single									
Phase				Inverter									
Voltage Regulation System				Pure Sine wave									
Waveform				Maximum power (KVA/KW)				7.5					
Output				Rated power (KVA/KW)				7.0					
Voltage(V)				220				120/240					
Current (A)				31.8				2 x 31.8-31.8					
Rated Power Factor (cos)				1.0				1.0					
Engine				YANMAR									
Maker				2TNV70-ASG				3TNM68-ASG					
Model				0.570				0.784					
Displacement (L)				9.3/3600				13.8/3600					
Rated output (kW/rpm)				2300 - 3400, Variable				Electric Starter					
Engine speed(r rpm)				Diesel Fuel (BS2869A1or equivalent)									
Starting System				12 - 36 (46B24L or 55B24L)				12 - 36 (46B24L)					
Fuel				1080 x 647 x 686				1184 x 670 x 770					
Battery (5HR)				257				278					
L x W x H (mm)				30.0				40.7					
Dry Weight (kg)				63.5				64.0					
Fuel Tank Capacity				65.5				66.0					
Sound Level				67.5				68.0					
[dB(A)/7m]				25% load				1.1					
				50% load				1.6					
				75% load				2.2					
				100% load				3.0					
Fuel consumption (litres)				YES									
Volt Meter				YES (LED Display)									
Hour Meter													
Warning Lights				R Type: Plug Socket x 3, LD Type: Plug Socket x 5									
Output				YES									
ATS Terminal													